

USB charger

Ref.-no.: USB PD60 C ..

GB

Operating instructions**1 Safety instructions**

Electrical devices may only be installed and connected by electrically skilled persons.

Serious injuries, fire or property damage possible. Please read and follow the instructions in full. Danger of electric shock. Always disconnect before carrying out work on the device or load. These instructions are an integral part of the product, and must remain with the end customer.

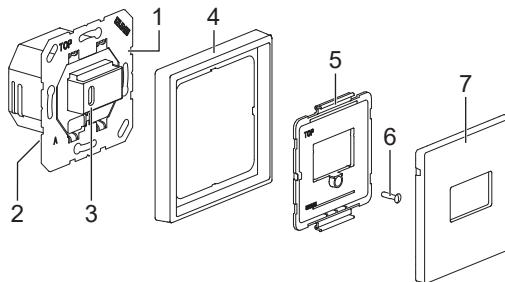
2 Device components

Fig. 1: Device components

- (1) USB charger
- (2) Connection terminals mains voltage
- (3) USB port
- (4) Frame
- (5) Holder plate
- (6) Screw
- (7) Centre plate

3 Function**Intended use**

- Charger for mobile device batteries with USB connection
- Installation in appliance box according to DIN 49073

Product characteristics

- 1 USB port type C
- Quick charge function USB Power Delivery (PD)
- Supports PD3.0, Quick Charge 4+ and PPS (Programmable Power Supply), among others
- Charging capacity up to 60 W
- Installation in multiple combinations possible

i Follow the charging instructions for the devices!

4 Information for electrically skilled persons

Installation and electrical connection



DANGER

Electrical shock on contact with live parts in the installation environment.
Electrical shocks can be fatal.

Before working on the device, disconnect the power and cover live parts in the area!

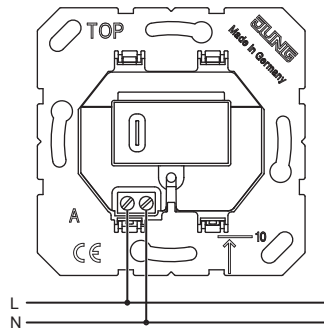


Fig. 2: Connection

- Connect the insert according to the connection diagram.
- Install the insert in the appliance box.
- Mount the frame and centre plate.
- Switch on mains voltage.

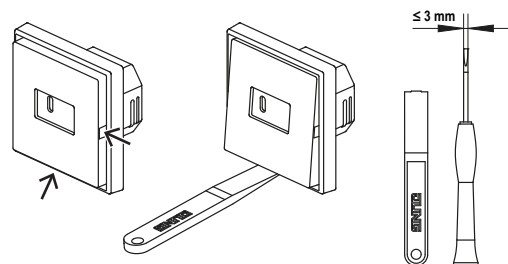


Fig. 3: Dismounting

i Dismounting only with a suitable tool at notches in the centre plate.

Technical data

Rated voltage	AC 220 ... 240 V ~ ± 10 %
Mains frequency	50/60 Hz
Ambient temperature	0 ... +45 °C
Storage/transport temperature	-20 ... +70 °C
Stand-by power	≤ 0.1 W
Screw terminals	0.75 ... 2.5 mm ²
Output voltage	DC 5 ... 20 V (± 5 %)
Output current	max. 3 A
Charging capacity	15 ... 60 W

5 Accessories

Centre plates	.. 1569 USB ..
	.. 1969 USB ..

6 Warranty

The warranty is provided within the framework of the statutory provisions via the specialised trade.